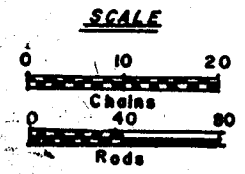
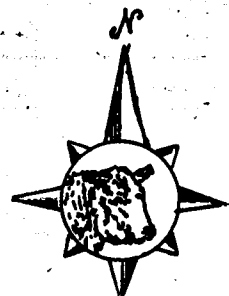
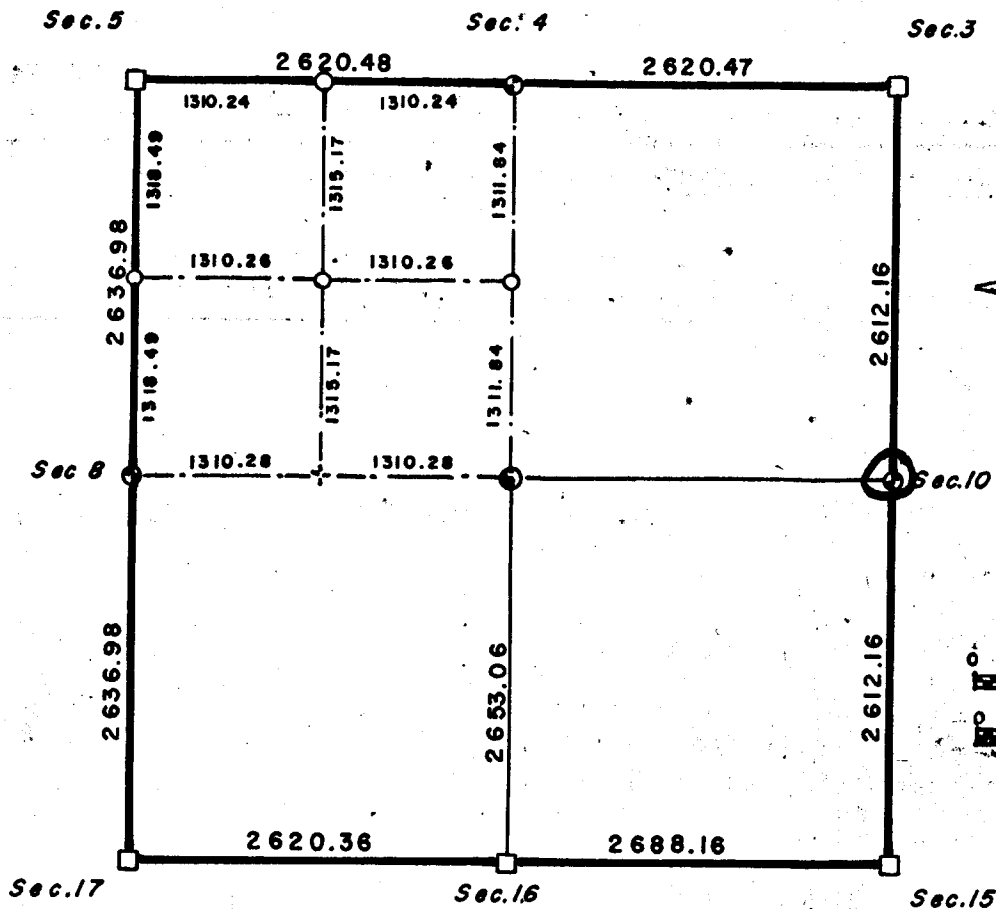


Section 9

T. 13 N., R. 69 W., 6th P.M.

LARAMIE COUNTY, WYOMING



LEGEND

- Stone found
- Aluminum cap set, No stone found, 1/4 corner
- ⊙ Center of Section, Aluminum cap set
- Aluminum cap set, 1/16 corner
- † Nail set, 1/16

State of Wyoming }
 County of Laramie }

CERTIFICATE of SURVEY

I, Larry T. Perry, a licensed surveyor in the State of Wyoming do hereby certify and declare that this drawing was prepared from field notes of a survey performed by me during the month of June 1985 A.D. and that it represents the corners as found and set. The 1/4 corners set were established in accordance with the BLM manual after a diligent search for the original stone monuments as set by the G.L.O. in the year of 1870.

Larry T. Perry, L.S.
 Larry T. Perry, L.S.
 Wyoming L.S. 3047